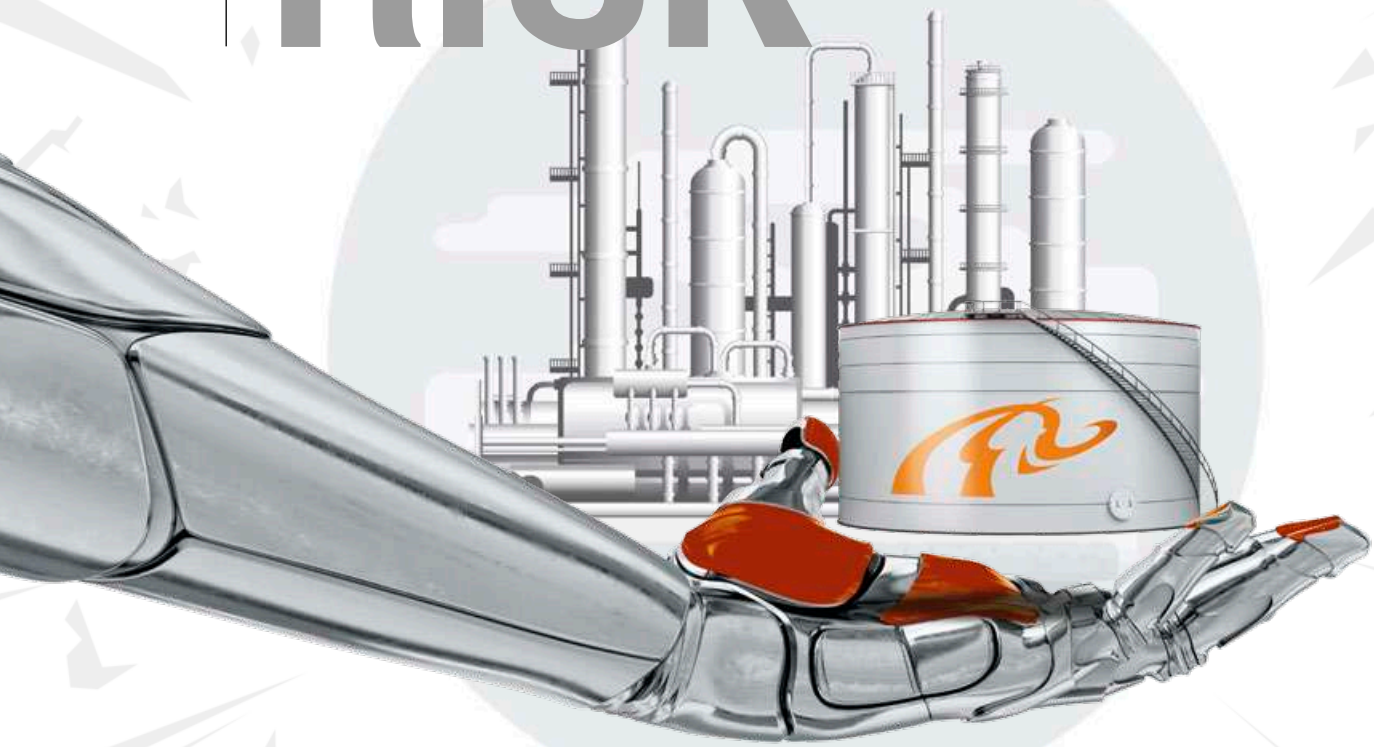


**NO**  
**MORE**  
**RISK**



**ATEX PRODUCTS**  
**EXPLOSION PROOF**

*gerotto.it*

MORE POWER IN EXPLOSION RISKS ZONES

THE WHOLE RANGE OF ATEX PRODUCTS

**NO MORE RISK**





NO MORE RISK



HIGHER PERFORMANCE  
EXPLOSION PROOF

*gerotto.it*

# FTC-NME

## FUEL TANK CLEANING NO MAN ENTRY

FTC-NME "Fuel Tank Cleaning – No Man Entry" is an Atex Zone 0 Certified System created for the Underground Fuel Tanks Cleaning with three main functions: chemical product spraying, high pressure washing and sludge removal.

FTC-NME ROV is composed of a stainless steel structure equipped with tracks made of dissipative material, and a telescopic arm equipped with high-pressure water nozzles for the cleaning of the surface of the underground tanks.

The results of the cleaning operation are then removed through the suction intake of the machine.



### SUITABLE TO WORK WITH

- Vacuum Trucks
- Suction Excavators
- Industrial Aspirators
- Dust Aspirators



*The images and technical data refer to machine already in production.  
The R&D Department is at disposal to customize the products according to the most various needs.*

OPTIONAL



ATEX Camera System Available



## ADVANTAGES

- No Man Entry Operations in high explosion and gas-presence risk areas
- Accurate and precise interventions
- Costs reductions
- Environmental sustainability

## TECHNICAL DATA

MANHOLE

Ø 450 mm

Ø 18"

DIMENSIONS

L	1000 mm	L	40"
H	350 mm	H	14"
W	350 mm	W	14"
⚖	80 Kg	⚖	176 lb



## CONTROL UNIT

DIMENSIONS

L	1300 mm	L	51"
H	930 mm	H	37"
W	1100 mm	W	43"
⚖	400 Kg	⚖	882 lb



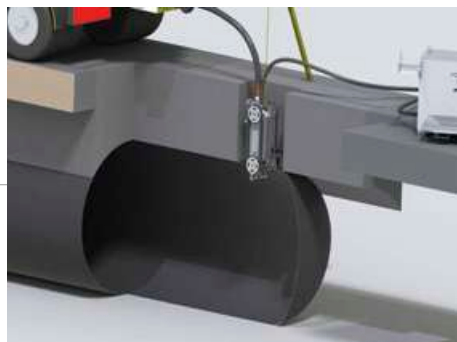
ROV parking

Easy transport

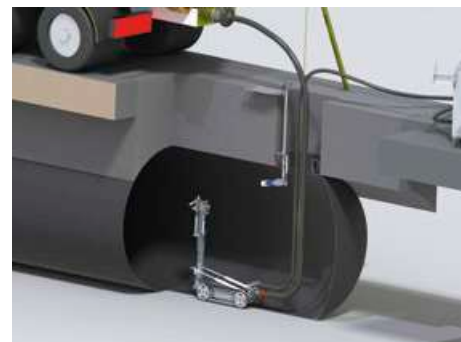
## WORK PHASES



1. FTC-NME connection to Suction Excavator or Vacuum Truck.



2. FTC-NME introduction in the tank through the manhole.



3. Tank washing and sludge aspiration.

# ATEX ZONE 0

## LOMBRICO AND GATTO

Lombrico and Gatto, in the last few years, have become very dependable products for any cleaning and reclaiming operation in confined spaces and in areas suspected of pollution, contamination and explosion risk.

Now a new step forward has been made with the developing of the ATEX Zone 0 Certified Lombrico and Gatto Mini Excavators. Both the machines can easily work with Suction Excavators, Vacuum Trucks and Industrial Aspirators in ATEX Environments.



### TECHNICAL DATA

#### ATEX ZONE 0 LOMBRICO

##### STANDARD SUCTION HOSE

Ø 150 mm	Ø 6"
----------	------

##### MANHOLE

Ø 500 mm	Ø 20"
----------	-------

##### DIMENSIONS

L	1650 mm	L	65"
H	470 mm	H	18,5"
W	470 mm	W	18,5"
	294 Kg		648 lb



#### ATEX ZONE 0 GATTO

##### STANDARD SUCTION HOSE

Ø 150 mm	Ø 6"
----------	------

##### MANHOLE

Ø 750 mm	Ø 30"
----------	-------

##### DIMENSIONS

L	1400 mm	L	55"
H	640 mm	H	25"
W	550 mm	W	22"
	400 Kg		882 lb

### FEATURES

- Two hydraulic driven rubber tracks
- Hydraulic manual manifold to control all the movements of the machine
- Power Pack Safety Box for ATEX Certified Machines in Operation
- Quick connection system to the external hydraulic source
- ATEX Certified Video Inspection System
- High Pressure/High Flow Water Spraying Configurations
- Various Tools Available



OPTIONAL

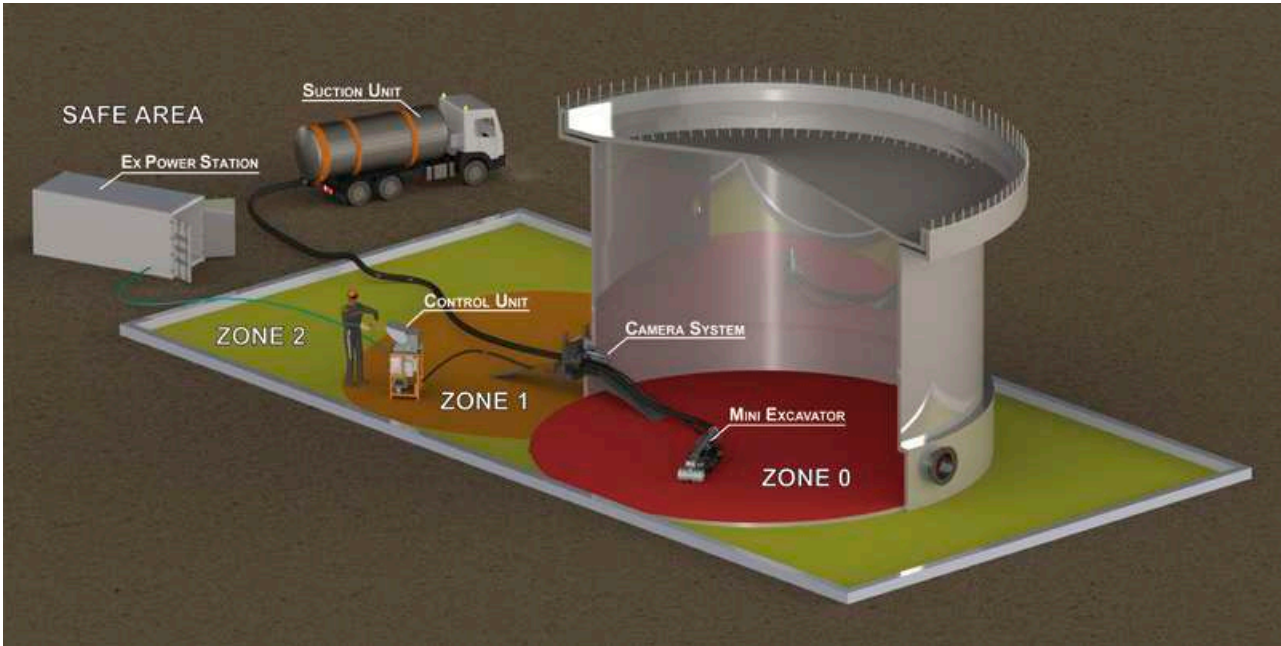


ATEX Camera System Available



## ADVANTAGES

- Safe No Man Entry operation in explosion-risk areas
- Accurate and precise interventions
- Operator in a safe area at a safety distance
- Cost reductions



## CONFIGURATION WITH

- Vacuum Trucks
- Suction Excavators
- Industrial Aspirators
  - Dust Aspirators
- Atex Vacuum Cleaners

## APPLICATION FIELDS

Ideal for cleaning and remediation in confined spaces:

- **STORAGE TANKS**
- **REFINERIES**
- **INDUSTRIES**
- **DIGESTERS**

# ATEX ZONE 0 CAMERAS AND LIGHTS



Gerotto Federico S.r.l. has developed an innovative Atex Zone 0 Certified video inspection system, allowing to use a high quality CCTV System in the highest explosion-risk areas.

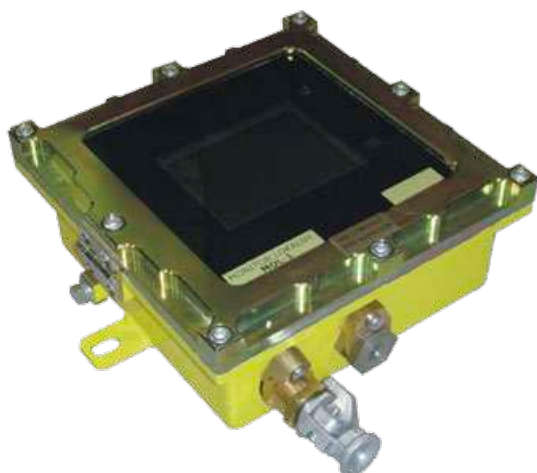
The system is composed of one or more Atex Zone 0 Certified cameras, one or more Atex Zone 0 Certified LED lights and a monitor, avoiding the creation of electrical charges and overheatings in the system.



*The LED Lights illuminate the hazardous area while the Camera sends a real-time video signal to the Monitor through an intrinsically safe cable.*



*It is also possible to chose the Full HD Camera for real-time coloured images (in case of poor lighting conditions, the camera will switch to b/w) and a 5-times-better video quality.*



*The Monitor could be an Atex Certified or not, depending on the needs.*



# APPLICATION EXAMPLES

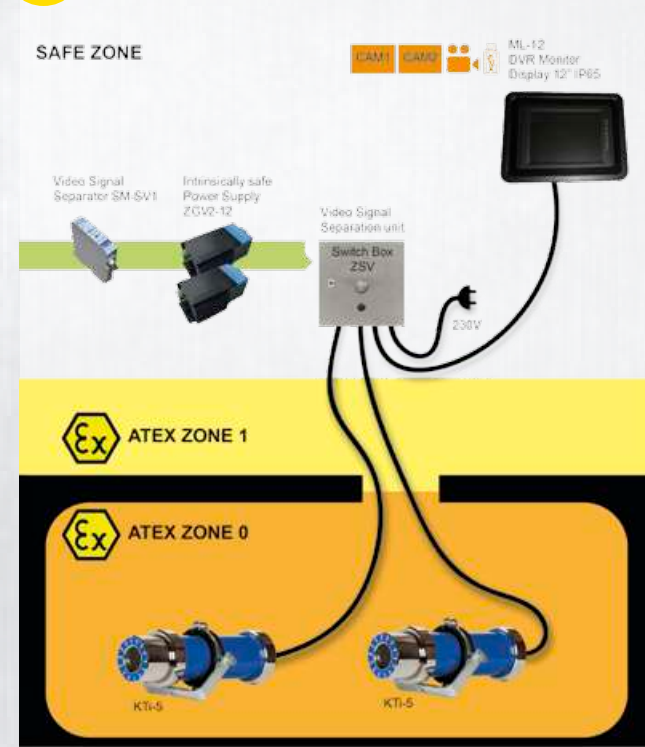
## ATEX ZONE "0" CAMERA SYSTEM

### 1 CAMERA



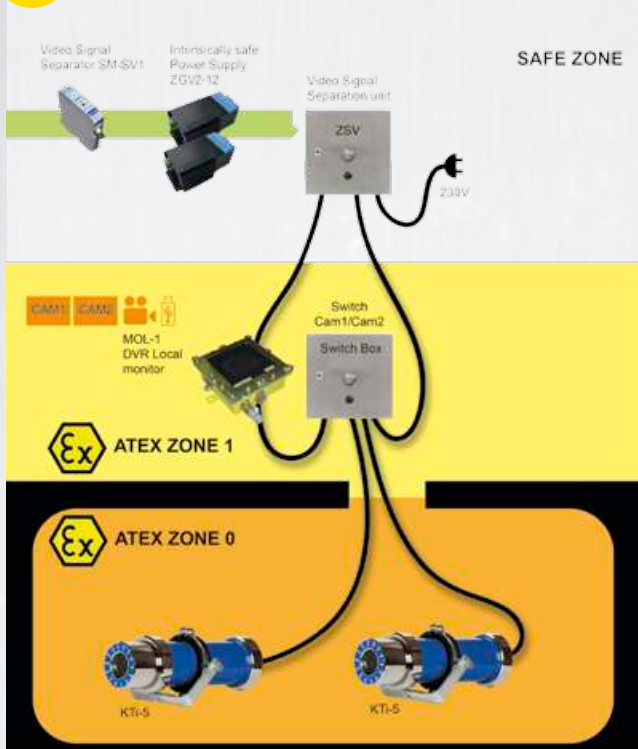
## ATEX ZONE "0" CAMERA SYSTEM

### 2 CAMERAS NON ATEX MONITOR



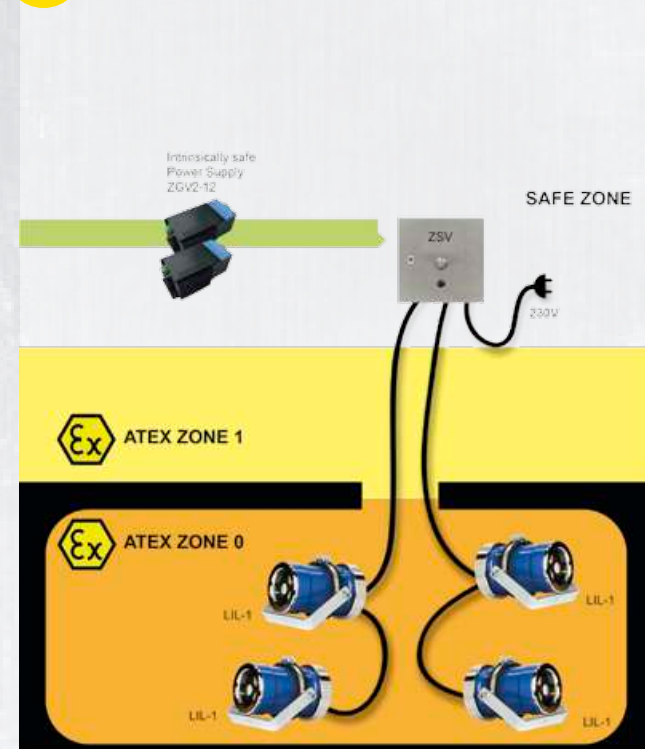
## ATEX ZONE "0" CAMERA SYSTEM

### 2 CAMERAS ATEX MONITOR



## ATEX ZONE "0" LED LAMPS SYSTEM

### 4 LED LAMPS



# TRACKED UNDERCARRIAGES



## CREATE YOUR MINI EXCAVATORS



	WEIGHT	HEIGHT	LENGTH	WIDTH
 <b>XXS</b>	60 Kg 132 lb	200 mm 8"	730 mm 29"	390 mm 15"
 <b>XS</b>	130 Kg 287 lb	280 mm 11"	970 mm 38"	420 mm 16,5"
 <b>S</b>	145 Kg 320 lb	280 mm 11"	970 mm 38"	420 mm 16,5"
 <b>M</b>	150 Kg 331 lb	300 mm 12"	985 mm 39"	500 mm 20"
 <b>L</b>	170 Kg 375 lb	300 mm 12"	1170 mm 46"	500 mm 20"
 <b>XL</b>	235 Kg 518 lb	360 mm 14"	1225 mm 48"	530 mm 21"

Gerotto's tracked undercarriages have been designed for creating customized Mini Excavators, adaptable to most different environments. All Gerotto undercarriages can go up slopes of up to 30% and reach a speed of 5 km/h on level surfaces.

Gerotto's tracked undercarriages are made of stainless steel, to guarantee a better resistance to wear and chemical agents.

Gerotto can provide, on request, undercarriages with Atex certification for Zone 2, Zone 1 or Zone 0 to work in potentially explosive environments. It is also possible to obtain the equivalent international certification (IECEX), or the specific one for North America (FM Approved in accordance with regulatory norm NFPA70/NEC500), China (CNEX) and Australia (ANZEX).

# Gerotto EX

*The classification given to a particular zone, depends on the likelihood of an explosive atmosphere occurring and its persistence if it does.*

**Zone 0 - A**  
*place in which an explosive atmosphere consisting of a mixture with air of dangerous substances in the form of gas, vapour or mist is present continuously or for long periods or frequently.*

**Zone 1 - A**  
*place in which an explosive atmosphere consisting of a mixture with air of dangerous substances in the form of gas, vapour or mist is likely to occur in normal operation occasionally.*

**Zone 2 - A**  
*place in which an explosive atmosphere consisting of a mixture with air of dangerous substances in the form of gas, vapour or mist is not likely to occur in normal operation but, if it does occur, will persist for a short period only.*

Aboveground and underground storage tanks regularly need to be cleaned. Operations are usually performed by workers who enter such dangerous and potentially explosive environments, and are exposed to many risks, for example chemical agents, physical injuries and ignition.

In the struggle to safeguard man's health, Gerotto has developed a full range of remote controlled robots and Mini Excavators for service and cleaning activities in hazardous environments.

These machines have to be connected to a suction unit (Vacuum Trucks, Suction Excavators, Pumps, etc.) and they will carry around the suction hose for material removal, reaching hazardous places.

In any case, the operator will be in a Safe Area controlling the machine using a remote control. He supervises the operations thanks to the images sent by cameras placed on the robot and on the manhole of the tank.

Cameras and lamps for video inspection are ATEX certified and can be combined to create complete systems, suitable for any working condition.



***gerotto.it***



**GEROTTO FEDERICO S.r.l.**

Via Croce, 26

35011 Campodarsego (PD) ITALY

**T +39 049 5564422 - F +39 049 5564784**

*info@gerotto.it - www.gerotto.it*

